

All technical recommendations for application we give to our clients to the best of our knowledge and according to the state of the art are not binding. According to our General Terms and Conditions of Business they do not establish any contractual legal relationship and no ancillary obligations resulting from the purchase contract. This does not release the client from his/her own responsibility to check our services, products and recommendations with regard to their suitability for the intended use. Our General Terms and Conditions of Business apply, which you can view at any time at [www.enviral.eu](http://www.enviral.eu).

## DATA SHEET

## ENV 110 – ENVPowderPrint in architecture quality

### Substrate material:

**ALUMINUM** mill finished (aluminum sheets)

### Component measurements:

Plain sheet up to l = 3,000 x w = 1,500 mm, sheet thickness = 5 mm  
or up to l = 4,000 x w = 2,000 mm, sheet thickness = 5 mm

### Exterior and interior application

### Component weight:

up to 50 kg

### Process:

Chromium free pre-treatment and powder coating with ENVPowderPrint process

### Product description:

Surface pre-treatment and surface coating on a lead-, chromium-, cadmium- and solvent-free basis in facade quality

### Properties:

The pre-treatment chemistry and powder coating have been tested by the "Gütegemeinschaft für Stückgutbeschichtung" and the ENVPowderPrint finish has passed the Qualicoat tests at an accredited testing institute. This finish is therefore suitable for architectural applications.

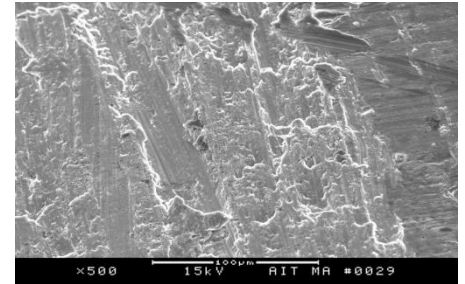
- Highest weather resistance
- Best mechanical properties
- Good flow
- Chromium-, lead-, cadmium- and solvent-free

**Application:** Coating of aluminum sheets for interior and exterior use

**Process restrictions:** Cavities, sharp edges and concealed areas (e.g. doublings) cannot be protected.

**Color tones:** freely selectable decors, depiction of photos and digital designs .

- Process description:**
- Acid mordant
  - Rinsing with fully demineralized water
  - Chromium-free pretreatment
  - Drying
  - Powder coating
  - Curing
  - ENVPowderPrint



**Assessment of the surface:** The finished coated surface is assessed in accordance with the Association of Window and Facade Manufacturers (Verband der Fenster- und Fassadenhersteller e.V.), VFF leaflet AL.02, status August 2016 (Visual assessment of organically coated surfaces on aluminum) and delivered in this quality. Additional requirements, including standard requirements or requirements of service specifications, are only valid if they have been explicitly confirmed in writing by ENVIRAL®.

**Suspension:** According to our suspension recommendations (compare data sheet ENV 800)

**Quality assurance:** Continuing process control and order-specific quality assurance, destructive and non-destructive

**Packaging:** Noppa foam, air cushion film

**Repair:** According to our repair recommendations (compare data sheet ENV 802)

**Cleaning:** According to our cleaning recommendations (compare data sheet ENV 801)

**Sealant adhesion:** According to sealant adhesion on powder-coated surfaces of facades (compare data sheet ENV 803)

**Approvals:** Environmental Product Declaration according to ISO 14025 and EN 15804:  
 EPD-VDL-20160263-IAG1-EN: Polyester powder coating  
 EPD-VDL-20160264-IAG1-EN: Epoxy powder coating  
 EPD-VDL-20160265-IAG1-EN: Hybrid powder coating  
 EPD-GDA-20190070-IBH1-EN: Aluminum profile coated